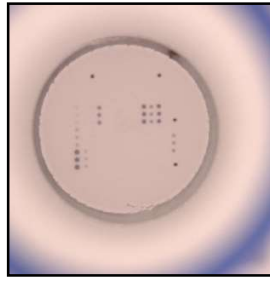


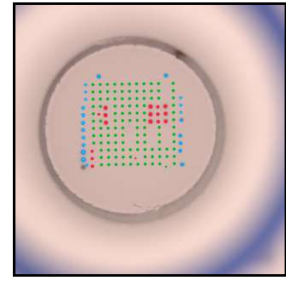
Report for Microblot-Array ANA plus IgG

Patient: x
 Lot number: x
 Well number: x
 Configuration: x

Image before analysis:



Analyzed image:



Test name: **ANA**
 Result: **Positive**
 Comment:
 Comment of the lab:

Antigen name	Result	Antibody level [U/ml]	Probable association with
Jo-1	Positive	703.05 (200 - 250)	ASS, PM, DM
PL-7	Negative	72.28 (200 - 250)	
PL-12	Negative	70.67 (200 - 250)	
EJ	Negative	65.46 (200 - 250)	
OJ	Negative	63.92 (200 - 250)	
KS	Negative	64.14 (200 - 250)	
YARS	Negative	65.60 (200 - 250)	
ZoA	Negative	63.84 (200 - 250)	
ZoB	Negative	88.71 (200 - 250)	
HMGCR	Negative	63.84 (200 - 250)	
SAE-1	Negative	64.99 (200 - 250)	
SAE-2	Negative	63.84 (200 - 250)	
SRP54	Negative	66.45 (200 - 250)	
Mi-2	Negative	63.84 (200 - 250)	
TIF1γ	Negative	63.84 (200 - 250)	
MDA5	Negative	66.18 (200 - 250)	
NXP2	Negative	69.97 (200 - 250)	
PMScl 100	Negative	74.34 (200 - 250)	
PMScl 75	Negative	70.48 (200 - 250)	
M2	Negative	71.82 (200 - 250)	
DFS70	Negative	83.57 (200 - 250)	
ScI70	Negative	64.52 (200 - 250)	
CENP A	Negative	63.84 (200 - 250)	
CENP B	Positive	1061.83 (200 - 250)	SSc, CREST syndrome
POLR3A	Negative	64.64 (200 - 250)	
NOR90	Negative	70.55 (200 - 250)	
Th/To	Negative	65.96 (200 - 250)	
PDGFR-β	Negative	63.84 (200 - 250)	
Fibrillarin	Negative	63.84 (200 - 250)	
Ro52	Positive	999.10 (200 - 250)	DM with progression of ILD, Raynaud's phenomenon, SLE, neonatal LE, SSc
Ro60	Positive	1006.89 (200 - 250)	SjS, neonatal LE, SLE
La	Positive	1001.59 (200 - 250)	SjS, neonatal LE, SLE
PCNA	Negative	71.39 (200 - 250)	
P0	Negative	69.48 (200 - 250)	
SmB	Negative	66.35 (200 - 250)	
SmD	Negative	68.76 (200 - 250)	
Nucleolin	Negative	70.46 (200 - 250)	
Nucleosome	Negative	68.81 (160 - 190)	
Histone	Negative	91.17 (160 - 190)	
RNP A	Negative	95.39 (200 - 250)	
RNP 68	Negative	63.84 (200 - 250)	
RNP C	Negative	73.56 (200 - 250)	
Ku	Negative	76.88 (200 - 250)	

dsDNA	Negative	84.29 (120 - 140)	
-------	----------	-------------------	--

Test name: **Myositis**

Result: **Positive**

Comment:

Comment of the lab:

Antigen name	Result	Antibody level [U/ml]	Probable association with
Jo-1	Positive	703.05 (200 - 250)	ASS, PM, DM
PL-7	Negative	72.28 (200 - 250)	
PL-12	Negative	70.67 (200 - 250)	
EJ	Negative	65.46 (200 - 250)	
OJ	Negative	63.92 (200 - 250)	
KS	Negative	64.14 (200 - 250)	
YARS	Negative	65.60 (200 - 250)	
ZoA	Negative	63.84 (200 - 250)	
ZoB	Negative	88.71 (200 - 250)	
HMGCR	Negative	63.84 (200 - 250)	
SAE-1	Negative	64.99 (200 - 250)	
SAE-2	Negative	63.84 (200 - 250)	
SRP54	Negative	66.45 (200 - 250)	
Mi-2	Negative	63.84 (200 - 250)	
TIF1γ	Negative	63.84 (200 - 250)	
MDA5	Negative	66.18 (200 - 250)	
NXP2	Negative	69.97 (200 - 250)	
PMScl 100	Negative	74.34 (200 - 250)	
PMScl 75	Negative	70.48 (200 - 250)	
Ro52	Positive	999.10 (200 - 250)	DM with progression of ILD, Raynaud's phenomenon, SLE, neonatal LE, SSc
Ku	Negative	76.88 (200 - 250)	

Test name: **Scleroderma**

Result: **Positive**

Comment:

Comment of the lab:

Antigen name	Result	Antibody level [U/ml]	Probable association with
PMScl 100	Negative	74.34 (200 - 250)	
PMScl 75	Negative	70.48 (200 - 250)	
M2	Negative	71.82 (200 - 250)	
ScI70	Negative	64.52 (200 - 250)	
CENP A	Negative	63.84 (200 - 250)	
CENP B	Positive	1061.83 (200 - 250)	SSc, CREST syndrome
POLR3A	Negative	64.64 (200 - 250)	
NOR90	Negative	70.55 (200 - 250)	
Th/To	Negative	65.96 (200 - 250)	
PDGFR-β	Negative	63.84 (200 - 250)	
Fibrillarin	Negative	63.84 (200 - 250)	
Ro52	Positive	999.10 (200 - 250)	DM with progression of ILD, Raynaud's phenomenon, SLE, neonatal LE, SSc
RNP A	Negative	95.39 (200 - 250)	
RNP 68	Negative	63.84 (200 - 250)	
RNP C	Negative	73.56 (200 - 250)	
Ku	Negative	76.88 (200 - 250)	

Test name: **SLE and other connective tissue disease (SjS, MCTD)**

Result: **Positive**

Comment:

Comment of the lab:

Antigen name	Result	Antibody level [U/ml]	Probable association with
NOR90	Negative	70.55 (200 - 250)	
Ro52	Positive	999.10 (200 - 250)	DM with progression of ILD, Raynaud's phenomenon, SLE, neonatal LE, SSc
Ro60	Positive	1006.89 (200 - 250)	SjS, neonatal LE, SLE
La	Positive	1001.59 (200 - 250)	SjS, neonatal LE, SLE
PCNA	Negative	71.39 (200 - 250)	
P0	Negative	69.48 (200 - 250)	
SmB	Negative	66.35 (200 - 250)	
SmD	Negative	68.76 (200 - 250)	
Nucleolin	Negative	70.46 (200 - 250)	
Nucleosome	Negative	68.81 (160 - 190)	
Histone	Negative	91.17 (160 - 190)	
RNP A	Negative	95.39 (200 - 250)	
RNP 68	Negative	63.84 (200 - 250)	
RNP C	Negative	73.56 (200 - 250)	
Ku	Negative	76.88 (200 - 250)	
dsDNA	Negative	84.29 (120 - 140)	

Borderline area information can be found in the table (in parentheses).

Test is valid.

Control name	Result	Value
CG	Positive	Intensity [AU]: 23.12 Antibody level [U/ml]: 959.96 VALID (ref. 250.00 U/ml)
TC	Positive	Intensity [AU]: 43.81 Antibody level [U/ml]: 1000.00 VALID (ref. 250.00 AU)
C1	Positive	Intensity [AU]: 14.21 Antibody level [U/ml]: 700.00
C2	Positive	Intensity [AU]: 5.42 Antibody level [U/ml]: 375.00
C3	Negative	Intensity [AU]: 0.05 Antibody level [U/ml]: 90.00
C4	Negative	Intensity [AU]: 0.06 Antibody level [U/ml]: 30.00

ASS	Antisynthetase syndrome
PM	Polymyositis
DM	Dermatomyositis
ILD	Interstitial lung disease
IMNM	Immune-mediated necrotizing myopathy
NM	Necrotizing myopathy
CDM	Cancer-associated myositis
IBM	Inclusion body myositis
SLE	Systemic lupus erythematosus
MCTD	Mixed connective tissue disease
SSc	Systemic sclerosis
SjS	Sjögren's syndrome
PBC	Primary biliary cirrhosis