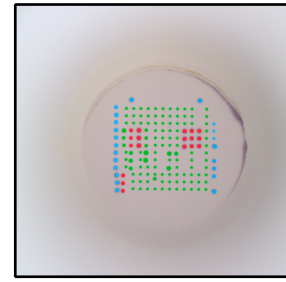
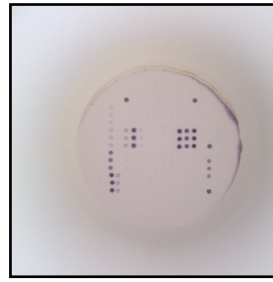


Report for ANA plus IgG

Image before analysis:

Analyzed image:

Patient:
Lot number: x
Well number: x
Configuration: ANApMA96



Test name: **ANA**
Result: **Positive**
Comment:

Replicate name	Result	Antibody level [U/ml]	Probable association with
Jo-1	Positive	352.24 (200 - 250)	ASS, PM, DM
CENP A	Positive	347.37 (200 - 250)	SSc, CREST syndrome
CENP B	Positive	928.07 (200 - 250)	SSc, CREST syndrome
Ro52	Positive	981.29 (200 - 250)	DM with progression of ILD, Raynaud's phenomenon, SLE, neonatal LE, SSc
Ro60	Positive	910.23 (200 - 250)	SjS, neonatal LE, SLE
La	Positive	981.29 (200 - 250)	SjS, neonatal LE, SLE

Test name: **Myositis**
Result: **Positive**
Comment:

Replicate name	Result	Antibody level [U/ml]	Probable association with
Jo-1	Positive	352.24 (200 - 250)	ASS, PM, DM
Ro52	Positive	981.29 (200 - 250)	DM with progression of ILD, Raynaud's phenomenon, SLE, neonatal LE, SSc

Test name: **Scleroderma**
Result: **Positive**
Comment:

Replicate name	Result	Antibody level [U/ml]	Probable association with
CENP A	Positive	347.37 (200 - 250)	SSc, CREST syndrome
CENP B	Positive	928.07 (200 - 250)	SSc, CREST syndrome
Ro52	Positive	981.29 (200 - 250)	DM with progression of ILD, Raynaud's phenomenon, SLE, neonatal LE, SSc

Test name: **SLE and other connective tissue disease (SjS, MCTD)**
Result: **Positive**
Comment:

Replicate name	Result	Antibody level [U/ml]	Probable association with
Ro52	Positive	981.29 (200 - 250)	DM with progression of ILD, Raynaud's phenomenon, SLE, neonatal LE, SSc
Ro60	Positive	910.23 (200 - 250)	SjS, neonatal LE, SLE
La	Positive	981.29 (200 - 250)	SjS, neonatal LE, SLE

Borderline area information can be found in the table (in parentheses).

Test is valid.

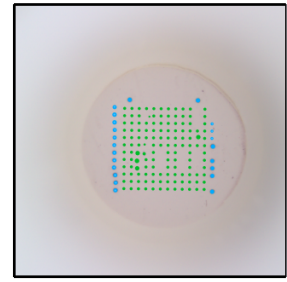
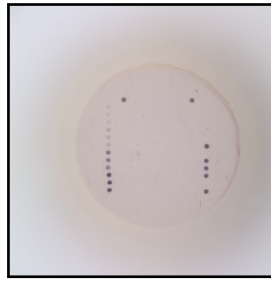
Replicate name	Result	Value
CG	Positive	Intensity [AU]: 46.69 Antibody level [U/ml]: 649.41 VALID (ref. 250.00 U/ml)
TC	Positive	Intensity [AU]: 84.58 Antibody level [U/ml]: 1000.00 VALID (ref. 25.00 AU)
C1	Positive	Intensity [AU]: 56.44 Antibody level [U/ml]: 700.00
C2	Positive	Intensity [AU]: 14.57 Antibody level [U/ml]: 375.00
C3	Negative	Intensity [AU]: 7.88 Antibody level [U/ml]: 90.00
C4	Negative	Intensity [AU]: 0.13 Antibody level [U/ml]: 30.00

ASS	Antisynthetase syndrome
PM	Polymyositis
DM	Dermatomyositis
ILD	Interstitial lung disease
IMNM	Immune-mediated necrotizing myopathy
NM	Necrotizing myopathy
CDM	Cancer-associated myositis
IBM	Inclusion body myositis
SLE	Systemic lupus erythematosus
MCTD	Mixed connective tissue disease
SSc	Systemic sclerosis
SjS	Sjögren's syndrome
PBC	Primary biliary cirrhosis

Report for ANA plus IgG

Image before analysis:

Analyzed image:



Patient:
 Lot number: x
 Well number: x
 Configuration: ANApMA96 (1.6)

Test name: ANA
 Result: Negative
 Comment:
 No positive or borderline replicates.

Test name: Myositis
 Result: Negative
 Comment:
 No positive or borderline replicates.

Test name: Scleroderma
 Result: Negative
 Comment:
 No positive or borderline replicates.

Test name: SLE and other connective tissue disease (SjS, MCTD)
 Result: Negative
 Comment:
 No positive or borderline replicates.

Test is valid.

Replicate name	Result	Value
CG	Positive	Intensity [AU]: 73.40 Antibody level [U/ml]: 894.13 VALID (ref. 250.00 U/ml)
TC	Positive	Intensity [AU]: 86.14 Antibody level [U/ml]: 1000.00 VALID (ref. 25.00 AU)
C1	Positive	Intensity [AU]: 56.15 Antibody level [U/ml]: 700.00
C2	Positive	Intensity [AU]: 15.87 Antibody level [U/ml]: 375.00
C3	Negative	Intensity [AU]: 7.73 Antibody level [U/ml]: 90.00
C4	Negative	Intensity [AU]: 0.10 Antibody level [U/ml]: 30.00

ASS	Antisynthetase syndrome
PM	Polymyositis
DM	Dermatomyositis
ILD	Interstitial lung disease
IMNM	Immune-mediated necrotizing myopathy
NM	Necrotizing myopathy

CDM	Cancer-associated myositis
IBM	Inclusion body myositis
SLE	Systemic lupus erythematosus
MCTD	Mixed connective tissue disease
SSc	Systemic scleroderma
SjS	Sjögren's syndrome
PBC	Primary biliary cirrhosis